

DRYTAC®



JETMOUNTER™

ROLLER LAMINATORS

JETMOUNTER™

JetMounter™ Roller Laminators

The design of JetMounter™ roller laminators is the culmination of three decades of experience in the mounting and laminating business. Equipped with the performance features our customers demand, JetMounter™ roller laminators are unmatched for value.



JM63Pro



JetMounter™ JM63Pro

Heated top roller laminator gives maximum flexibility.

The JM63 is a versatile wide-format roller laminator with roll to roll capability at a price you didn't think was possible. The addition of the heated top roller allows it to be used with Heatset™ and single-sided thermal overlaminates as well as pressure sensitive laminates and adhesives.

Features:

- Top silicone roller has an adjustable temperature range from room temperature to 248°F (120° Celsius)
- Effective laminating width of 63" (1600 mm)
- Auto and foot pedal operation modes
- Speed control 0 - 12 ft (3.65 m) per minute
- Maximum 2" nip opening
- Nip pressure indicator
- Fold away front table
- Heavy duty lockable casters
- Two top mounted emergency stops
- "Hold flat" paper in-feed guide
- Large 5.5" diameter non-stick silicone rollers
- Self-checking photo cells for finger protection
- Top and bottom supply shafts with brake tension control
- Top and bottom wind-up shafts with adjustable clutch speed.
- Single mechanical height/pressure adjustment (No compressor needed)
- Extra rear windup shaft driver for rewinding roll to roll

JM63PRO SPECIFICATIONS

Max Laminating Width	63"
Max Nip Opening	2" (5.08 cm)
Uncrated Weight	970 lbs. (440 kg)
Width	83" (210.8 cm)
Depth	29" (73.7 cm) w/o table up 32" (81.3 cm) w/ table up
Height	49" (124.4 cm)
Roller Diameter	5.5" (13.97 cm)
Speed Range	0 - 13 ft/minute (0 - 4 m/minute)
Power (U.S. and Canada)	220V 50/60Hz, 13A Single Phase
Power Consumption	2700 Watts

JetMounter™ JM55Fuzion

The new JetMounter™ JM55Fuzion has many of the convenience features of the JM63Pro, with the smaller laminating width and price point of a standard wide format roller laminator. Equipped with top and bottom auto-grip supply shafts, rear and front take-up or feed shafts, and a heat-assist top roller, the JM55Fuzion is ideal for shops wanted to add roll to roll laminating capabilities at a lower price tag. Excellent for laminating vehicle wraps, creating window decals and mounting graphics to substrates. Built to the same quality specifications and engineering standards of all our JetMounter™ laminators.

JM55FUZION SPECIFICATIONS

Max Laminating Width	55"
Max Nip Opening	1" (2.5 cm)
Uncrated Weight	573 lbs. (260 kg)
Width	73" (185 cm)
Depth	24" (61 cm)
Height	48" (122 cm)
Heat Assist Roller	Yes (110° F/43° C)
Roller Diameter	5.5" (13.97 cm)
Speed Range	2-10 fpm (0.6 - 3 mpm)
Power (U.S. and Canada)	115VAC or 220V 50/60Hz, Single Phase



JM55Fuzion



JetMounter™ JM63SHA-HA, JM55SHA-HA & JM44SHA

In addition to the standard features offered by all JetMounter™ electric models, including variable speed electric drive, silicone rollers, all-steel construction, forward and reverse, foot pedal and photo-cell safety protection, the JM63SHA-HA, the JM55SHA-HA and the JM44SHA offer these additional features:

- Single height adjuster to set even pressure more easily
- LCD pressure gauge display allows greater control over the process
- Front-mounted media unwind tray with supply shaft can be used for feeding media, mounting adhesive or kraft paper
- Heavy duty metal stand with locking casters (comes standard with all three models)

The JM63SHA-HA and the JM55SHA-HA also now offer a heat assist roller that runs at 110° Fahrenheit (43.3° Celsius) to help pressure sensitive laminates flow out and prevent silvering.



JM63SHA-HA & JM55SHA-HA



JM44SHA

JM63SHA-HA, JM55SHA-HA & JM44SHA SPECIFICATIONS

	JM63SHA-HA	JM55SHA-HA	JM44SHA
Max Laminating Width	63.75" (162 cm)	56" (142 cm)	44.5" (113 cm)
Max Nip Opening	1" (2.5 cm)	1" (2.5 cm)	1" (2.5 cm)
Uncrated Weight	440 lbs (200 kg)	337 lbs (153 kg)	268 lbs (122 kg)
Width	83" (211 cm)	71" (180 cm)	61" (153.9 cm)
Depth	19" (48 cm)	19" (48 cm)	19" (48 cm)
Height (without stand)	19" (48 cm)	19" (48 cm)	19" (48 cm)
Height (with stand)	48.7" (123.7 cm)	48.7" (123.7 cm)	48.7" (123.7 cm)
Roller Diameter	5" (13 cm)	5" (13 cm)	4" (10.2 cm)
Speed Range	2 - 10 fpm (0.6 - 3 mpm)	2 - 10 fpm (0.6 - 3 mpm)	2 - 10 fpm (0.6 - 3 mpm)
Heat Assist Roller	Yes (113° F/45° C)	Yes (113° F/45° C)	N/A
Front Media Unwind Tray	Yes	Yes	N/A
Power	110 V/220V 50/60Hz (725/2600 Watts), Single Phase	110 V/220V 50/60Hz, (725/2600 Watts), Single Phase	110 VAC 50/60Hz

JetMounter™ JM18, JM26 & JM34

The JM18, JM26 and JM34 are motorized table top laminators operated by a foot switch, leaving both hands free to handle the work being processed. These models are designed for mounting and laminating inkjet outputs, but are equally capable of handling photographic or any printed media. All models include a supply shaft and photo cells for operator protection.

Note: There are no rewind shafts on these models.



JM18, JM26 & JM34 SPECIFICATIONS

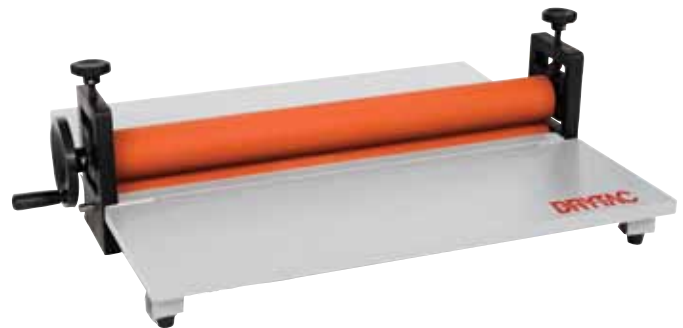
	JM34	JM26	JM18
Max Laminating Width	34.25" (87 cm)	26.25" (66.7 cm)	18.25" (46 cm)
Max Board Thickness	.75" (1.9 cm)	.75" (1.9 cm)	.75" (1.9 cm)
Unpacked Weight	70.5 lbs (32 kg)	53 lbs (24 kg)	51 lbs (23 kg)
Width	41" (105 cm)	33.25" (84.5 cm)	25.5" (65 cm)
Depth	11.8" (30 cm)	12" (31 cm)	11.75" (30 cm)
Height	13.38" (34 cm)	12" (31 cm)	13" (33 cm)
Speed Range	2.5 - 18 fpm (0.76 - 5.5 mpm)	2.5 - 18 fpm (0.76 - 5.5 mpm)	2.5 - 18 fpm (0.76 - 5.5 mpm)
Power	110 VAC 50/60 Hz	110 VAC 50/60 Hz	110 VAC 50/60 Hz

ML13 & ML25

These table-top manual laminators are an inexpensive option for small photo studios or copy shops that want a quick solution to mount or laminate small pieces. Simple, durable construction make these models easy to use. They also folds up for easy storage and transport.

ML13 & ML25 SPECIFICATIONS

	ML13	ML25
Max Laminating Width	13.5" (33 cm)	25.5" (64.8 cm)
Max Nip Opening	.375 (1 cm)	.375" (1 cm)
Weight	25 lbs (11 kg)	32 lbs. (14 kg)
Width	15.375" (39 cm)	27.375". (69.5 cm)
Depth	24.5" (62.2 cm)	24.5" (62.2 cm)
Height	10.25" (26 cm)	10.25" (26 cm)
Roller Diameter	2.5" (6.3 cm)	2.5". (6.3 cm)



Contact your local distributor:

DRYTAC®

US TOLL FREE 1-800-280-6013
CANADA TOLL FREE 1-800-353-2883

ON THE WEB
www.drytac.com